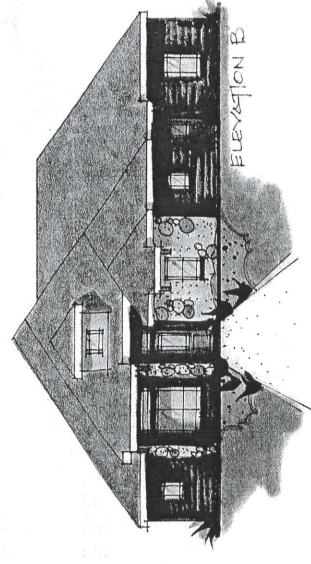
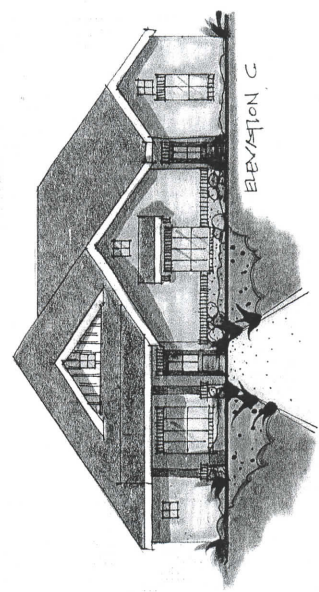


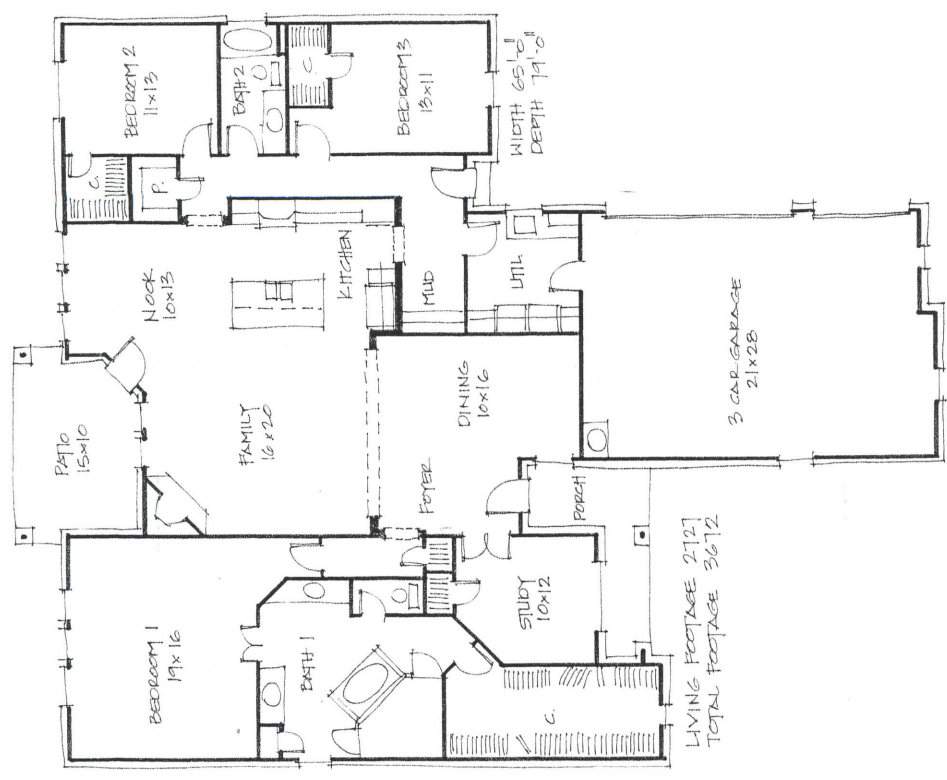
ELEVATION A



ELEVATION B



ELEVATION C



LIVING FOOTAGE 2127  
TOTAL FOOTAGE 3672

PROJECT: RYPER II - APARTMENT	
DESIGNED BY: ROBBIE HALE HOMES	DRAWN BY: ROBBIE HALE HOMES
DATE:	DATE:
DRAWN FOR: ROBBIE HALE HOMES	